

BRIGHT TOUCHES

Jaunty bucket lights and an orange splashback lift the spirits in what is a sunless room for most of the time

UNITS

Slate grey used on the wall units and island differs slightly from the navy blue floor units; both colours contrast well with the orange splashback

SPLASHBACK

Opticolour toughened glass had to be templated on site to take the sockets into account

WORKSURFACE

A Silestone worktop with inset drainage grooves gives a sleek look

ISLAND

The focus of the new space is the island with breakfast bar, finished in the same slate gloss as the wall units. It contains recycling bins and drawers for cutlery

BEFORE



'A NEW LAYOUT HAS GIVEN US A FAMILY LIVING SPACE'

Swapping and updating an old-fashioned dining room and kitchen has created a stylish contemporary scheme ▶

GARDEN VIEW

The dining area is now at the rear, adjacent to sliding doors that span the width of the house



STORAGE

Corner shelving units make the most of every inch, while the blue casserole dishes match the colour of the cupboard doors

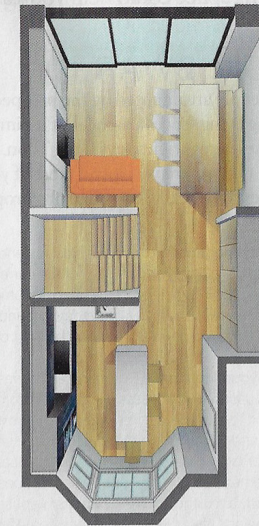
DOUBLE VISION

A pair of statement lights from Italy create a focal point over the dining table



IN DETAIL MAKING PLANS

THE NEW LAYOUT



Swapping the dining room and kitchen and building a new staircase further back has resulted in a space that flows easily from one area to the other

'The dining table is just beyond the kitchen, so serving food is easy now. And when we have all six children here, that's important!'

SHOPPING LIST

WALLS painted in White Cotton matt emulsion, £23.96/2.5L, Dulux

UNITS AND SURFACES

Brigitte Fresh Slate Grey units; Brigitte Quadro Pearl Grey tall units; all £12,200; Blanco Stellar Silestone worktops, £3,000; Opticolour orange splashbacks, £1,200; all The Kitchen Partners

SINK AND TAPS Blanco Und Subline Alu metallic sink, £469; Blanco PK5400BS Pack Upgrade steel tap, £36; all The Kitchen Partners

APPLIANCES Neff Flex induction hob, £813; Neff fully integrated dishwasher, £496; Britannia Visso stainless-steel hood, £399; Neff built-in single-door fridge, £859; Neff built-in single-door freezer, £994; all The Kitchen Partners. Combi steam oven DGC 6100, £1,425; BPMK 6010 oven, £1,149; both Miele

LIGHTING Tam Tam 4 Marset Bucket lighting, £925; Foscarini Le Soleil LED light, £826; both Oskar Furniture

WOODBURNER Fireline Woodtec 5kw woodburner, £948, Period Fireplaces

FURNITURE Orange sofa, £600, The Sofa Library. Oak table, £1,300; oak bench, £1,200; both Rooted Furniture

FLOORING Engineered natural oak flooring, £41.95/sq m, Oak Flooring Direct
DOORS Sliding aluminium doors, £5,300, Bristol Bifold

FOR STORE DETAILS SEE WHERE TO BUY PAGE

WHAT IT COST

Units	£12,200
Worktop	£3,600
Appliances	£6,135
Splashback	£1,200
Sink and taps	£505
Lighting	£1,751
Flooring	£3,600
Sliding doors	£5,300
Woodburner	£900
Furniture	£3,100
Total	£38,291



Caroline Beale, a therapist, and husband Noel, a lawyer, live in a six-bedroom Victorian terraced house in Bristol. Between them they have six children – and two of them still live at home permanently

Tell us about the old kitchen...

It was out of date and impractical for a large family. The house had been in the same ownership for 40 years before we bought it and it needed quite a bit of modernisation – it had no central heating! The kitchen was at the back, with a door into the garden. There was a dining room at the front, with minimal natural light, separated from the kitchen by a staircase that took up a lot of room. The layout didn't suit us so we never spent any time in there.

How did you get started?

We employed a project manager, Simon Heckford of Oasys Property Solutions, and he suggested we consult Elke Ditttrich of DHV Architects. It was her idea to take out the staircase and build a new one further back so we would then have an open-plan area that flows between the two rooms. She also suggested we swap the rooms around to give us a bigger kitchen – essential for a large family – and a dining room with access to the garden, so it could become more of a central living space.

You got extra help with the design...

Yes, The Kitchen Planners, a local company, fine-tuned Elke's design. They suggested putting in a wall where the stairs used to be so our washing machine and tumble dryer could stand against it.

What did the work entail?

Both rooms were gutted, rewired, replumbed and replastered. An

old lloo leading from the kitchen was demolished and a cloakroom built adjacent to the new kitchen, while the fireplace in the original front room was removed and a woodburner installed in its place. An understairs cupboard holding a washing machine and tumble dryer became a mini utility room, and sliding glass doors were fitted across the whole four-metre length of the back wall in the dining area, giving a full view of the garden.

How long did it all take?

Three months for the actual kitchen-dining area work. There was more to do than anticipated as quite a few RSJs were needed, including a sort of goalpost effect around the sliding doors, which meant two tons of concrete had to be poured into a hole to anchor them. We also installed underfloor heating beneath new engineered-oak planks. Luckily, while the work was being done we had a temporary kitchen put in upstairs, so things could have been worse.

Did you choose the striking colour scheme?

Yes, though the orange splashback in toughened glass came afterwards. We began with a slate-coloured island and wall cupboards and navy blue floor cupboards, and went for a floor-to-ceiling wall of concrete-grey units at the entrance to the dining area. Because this is quite a dark space that only ever gets the sun in the mornings, we wanted something fun and bright. I love orange, so it seemed the perfect colour to add warmth. Another cheerful element is the Italian lighting track from Oscar, which looks like a series of buckets hung above the island.

What was the most expensive outlay?

The Miele ovens – one is a combi-steam. We chose them for their fantastic quality. And the only mistake we made – but it was a big one – was to invite the whole family round for Christmas lunch, so it ended up being a race against time! The builders left on 23 December and the kitchen still wasn't finished, but we were able to cook in it, and served up and ate in the dining room. Although it was nerve-racking at the time, it turned out well in the end.

WORDS: VICTORIA JEWINS PHOTOGRAPHY: WILLIAM GODDARD PLAN: NERVIS AWAK



NEW LAYOUT

Moving the staircase and relocating an old cloakroom has resulted in a more practical space